

# Contents

## Introduction

[What is it?](#)  
[Encryption and Copyright](#)  
[Pricing](#)  
[ShareWare](#)

## Gadfly Toolbox Reference

[BackupThisDoc](#)  
[ChangeQuoteDash](#)  
[ChangeTool](#)  
[ChooseDirectory](#)  
[ControlRun](#)  
[CopyMacros](#)  
[CreateIconThisDoc](#)  
[CreateOutlineDoc](#)  
[DeleteIdleStyles](#)  
[EncryptMacros](#)  
[EncryptTemplate](#)  
[FiddleNotes](#)  
[FileFind](#)  
[FileTemplate](#)  
[MacroKey](#)  
[MakeBook](#)  
[MakeWordBook](#)  
[ManageKeys](#)  
[ManageMacros](#)  
[OpenMRUList](#)  
[PrintListOfPages](#)  
[PrintOddEven](#)  
[ReInsertFootnotes](#)  
[SnapShot](#)  
[SyncStyles](#)  
[ToggleClearScreen](#)  
[ToggleHidden](#)  
[ToggleOutline](#)  
[TogglePictures](#)  
[ToggleRevision](#)  
[ToggleStyleBar](#)  
[ToggleViewTools](#)  
[ToggleWindow](#)  
[WindowCascadeAll](#)  
[WindowStack](#)  
[WinSideBySide](#)

## gLib

[Overview](#)  
[Main dialog box](#)  
[gLib Reference](#)

## What is it?

This collection of macros began humbly enough during the initial release of *Word for Windows* as a group of useful toggle macros, a couple of window arrangement macros, and an envelope printing macro.

Many, if not most, of those macros came about either because I wanted them for my own use, or because someone on the *Word for Windows* forum of CompuServe suggested thus and such could not be done (and I took the bait). Many came about as a direct result of conversations with James Gleick, Barry Simon, and Robert Enns (the original other WinWord Gadfly Team members). I'd like, again, to thank them and all the other members of that remarkable forum, for their help and suggestions.

As the macros accumulated, and they became more and more complicated--both in terms of their functionality, and in terms of their "error handling"--these macros graduated from hobby to product. With the gathering of the original GJGMAx.ZIP files into GTOOLS.ZIP (and the addition of several new macros), they became the first ShareWare incarnation of my work.

Some new macros were kept separate, either because of functional specificity (like the printer related macros or the Current DDE macro GetAddress) or because they were so much larger and more "stand-alone-ish" than the others (like **ChooseDirectory** or **MacroKey**). This resulted in a bit of confusion.

With this release of what was **GTOOLS**, with a new name -- **GTOOLBOX** -- I am gathering the vast majority of my *Word for Windows* macros into a single package. And requesting a single registration price for all.

## **Encryption and Copyright**

The macros in this package are not encrypted. This means you can easily modify their functionality to suite your particular preferences. And, if so inclined, you can learn quite a lot about WordBASIC by studying these macros. However, distributing any modified versions of these macros, in any manner, is strictly prohibited.

If you are interested in a site license, or a license to distribute modified/customized versions of these macros to your clients, please contact the author.

# Pricing

**Price:** \$49.95

Includes disk and bound manual.

## **Ordering:**

Advanced Support Group  
11900 Grant Place  
St. Louis, MO 63131

1-800-788-0787

## **Incremental updates**

There may be incremental releases--to fix any bugs found in this release, to tweak performance, to add additional macros--between now and the next major release of *Word for Windows*. These "updates" will be free to all registered users when downloaded from electronic services. There may be a nominal upgrade charge when ordered from Advanced Support Group.

## ShareWare

This product is being distributed as ShareWare. This means you are under no obligation to pay for the product **unless** you continue to use it.

But if you do use (and learn from) these macros, please register. A great deal of effort went into their construction. Your registration will support the continuation of the Gadfly Macros series...

You are encouraged to distribute the package, as is, to other *Word for Windows* users.

# BackupThisDoc

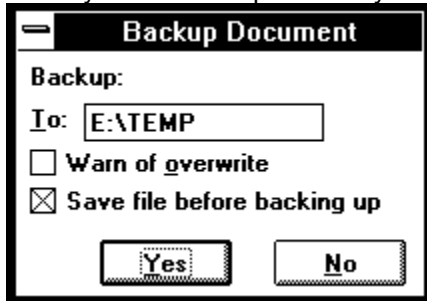
This macro grew out of my work on gScript (a Word for Windows application for feature screenplays) and the book *Take Word for Windows to the Edge*.

It performs a single function: it copies the currently active document to a backup directory.

The first time you run BackupThisDoc you will be prompted to supply the backup destination. This should be either a drive designation (such as A:) or a full path name (such as C:\BACKUP).

Subsequent calls to BackupThisDoc will remember the last backup-path used. The backup path is stored in your WIN.INI file under [Microsoft Word 2.0] next to the keyword "Backup-To."

When you run BackupThisDoc you will see the following dialog box:



Note: if the document you are backing up has not been saved you will be asked if you wish to save before copying. If you do not check the **Save file before backing up** box then the most recently saved version will be copied.

The **Warn of overwrite** box should be checked if you want the macro to tell you if there is already of file of the same name in the backup directory.

If the path specified in the **To** edit box does not exist, or if there is no diskette in the drive, the macro will display an error message and then redisplay.

Tip: you can have BackupThisDoc execute every time you close a document by creating an AutoClose macro (either globally or for a specific template) consisting of the single line:

**ToolsMacro .Name = "BackupThisDoc", .Run, .Show = 1**

# ChangeQuoteDash

## Purpose

**ChangeQuoteDash** allows you to easily toggle between Typewriter quotation marks and Typeset (Publishing) quotation marks. It also allows you to toggle between double hyphen and EMDash and single hyphen and ENDash.

Normally, when you type a quotation mark, *Word for Windows* inserts Character #34: "This sentence is surrounded by normal quotation marks." And, similarly, when you insert a "single quotation mark", *Word for Windows* inserts Character #39, the Apostrophe: For instance:

"We're at the 'mercy' of our computers!" he said with chagrin.

The contraction apostrophe and the single quotation marks around 'mercy' are the same character.

Similarly, the opening and closing double quotation marks around the phrase are the same.

These marks are sometimes called Typewriter quotation marks.

Well, that's all you need if you are using a fixed font such as Courier or Prestige Elite. These fonts don't distinguish between Open and Close Quotation marks, However, proportionally spaced fonts, such as Times Roman, do.

*Word for Windows* provides a way to insert individual Publishing quotation marks with **InsertSymbol** command..

There is also a macro in the **newmacros.doc** called **SmartQuotes** which allows you to turn Publishing quotation marks on and off. (Note: there is an improved version of SmartQuotes available on CIS under the named **GSMART.ZIP**. It's FreeWare.)

However, what if you don't always want Publishing Quotation marks? And what if you started a document without them and now you do want them?

**ChangeQuoteDash** is a SmartQuotes post processor.

A possible way, if you are like me, to use this macro, is before printing--that is, enter text without SmartQuotes installed, and then when you want a typeset style copy with Publishing characters, run this macro. If you don't save after printing, the document will remain in typewriter format.

## Conventions:

### EmDash:

An EMDash should be represented, in Typewriter style, by two hyphens with not spaces before of after. Compare:

There is nothing--not a thing--wrong with this line, aside from silliness.

This line -- for what it's worth -- has spaces on either side of the dash.

### EnDash:

An ENDash is not interchangeable with all single hyphens. It should be used in cases such as date ranges:

1990-1992

--would require an ENDash in Typeset style. Whereas compound words or hyphendation breaks would not.

For this reason, incidently, the option to change single hyphens to ENDashes requires user intervention. You have to confirm each change.

### Non-breaking hyphens

For the purposes of this macro, regular hyphens and non-breaking hyphens (entered with Ctrl+Shift+Hyphen) are equivalent. That is, a pair of non-breaking hyphens will be converted to an EMDash, and a single non-breaking Hyphen will be presented as an ENDash candidate. (Entering Non-breaking hyphens is covered on page 90 of the manual).

NOTE: since double hyphen pairs (Typewriter EMDash) should never be broken at a line end and a hyphen that would convert to an ENDash should never be separated from the two terms it separates, when you convert from Typeset back to Typewriter, the macro will use the non-breaking hyphen, not the normal hyphen.

## Scope: (what it changes...)

**ChangeQuoteDash** makes the following assumptions about *what* you wish it to change:

- If the selection, when the macro is invoked, is an insertion point (i.e. a blinking line), **ChangeQuoteDash** will operate on the entire document.
- If the selection is a solid block/selection (i.e. you have marked a section of text from the entire document), **ChangeQuoteDash** will operate **only on that selection**.

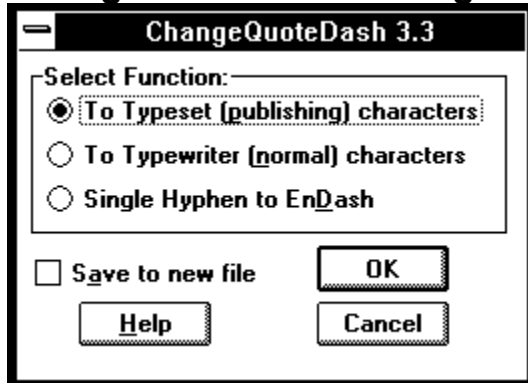
This is useful in the following scenario: You have a document, such as a manual, the majority of which is proportionally spaced (and therefore Typeset mark qualified). But there is a section of the manual that is formatted in Courier or LinePrinter--this section might be, for instance, a macro listing. In that section you do not want typeset marks. You want normal typewriter marks. Simply select the section of the document to toggle to typewriter and run the macro again.

## Related Topics:

[ChangeQuoteDash: dialog box:](#)



## ChangeQuoteDash: dialog box:



This dialog box consists of three option buttons and a check box.

### To Typeset (publishing) characters

This button will change all normal inch/pound, typewriter quotation marks to the curly quotation marks used by typesetters.

It also automatically converts all hyphen and non-breaking hyphen pairs to an EMDash.

### To Typewriter (normal) characters

This button will change all typeset type quotation marks back to the normal typewriter type.

It will also change all EMDashes to a pair of non-breaking hyphens, and all ENDashes to a single non-breaking hyphen.

### Single Hyphen to EnDash

This option will begin a search and replace for all remaining hyphens and prompt the user if the found hyphen or non-breaking hyphen should be replaced with an ENDASH.

This last option **only** converts from hyphens to EnDashes. It should be run AFTER the first option (to typeset) and need not be run at all when converting back to typewriter).

### Save to new file

If this box is checked the macro will perform a **FileSaveAs** so that you can create a copy of your document before execution.

# ChangeTool

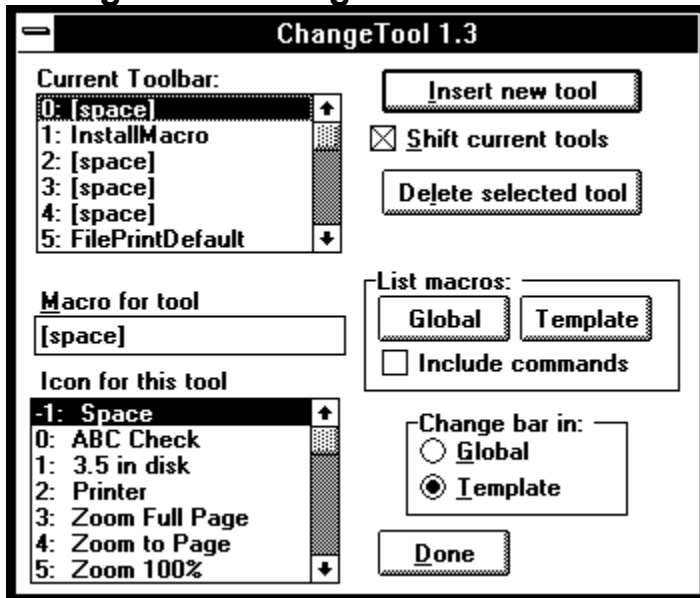
One of the limitations of the built in **ToolsOptionsToolBar** command is that if you want to rearrange the icons in either NORMAL.DOT or a template you have to literally remove and replace each one.

This macro allows you to insert a new tool and move the rest to the right, replace a tool with another, replace a tool with a space, or remove a tool altogether.

## Related Topics:

[ChangeTool: dialog box:](#)

## ChangeTool: dialog box:



The dialog box consists of six parts:

- 1) a listbox containing the **Current Toolbar**
- 2) to the right of this are two PushButtons and a checkbox which control the modification to be made; they are:

CheckBox:

### Shift current tools

This checkbox determines what will happen to the existing tools when either of the other modification buttons are selected.

With Insert this shifts current tools to the right.

With Delete this shifts current tools to the left.

Buttons:

**Insert new tool** - selecting this button will place the new tool at the current location.

If Shift current tools is active (checked) the new tool will move existing tools to the right. If Shift current tools is inactive (not-checked) the new tool will replace the currently selected tool.

**Delete selected tool** - selecting this button will remove the selected tool.

If Shift current tools is active (checked) the existing tools will shift to the left. If Shift current tools is inactive (not-checked) the selected tool will be "deleted" and replaced by a Space.

- 3) an Editbox titled **Macro for tool**

Type the macro to add to the Toolbar in this editbox. By default the proposed macro is [space].

- 4) To the right of this editbox is a group box containing one (if the current context is limited to NORMAL.DOT) or two (if the current document is based on a template and therefore there are two contexts: global and template) buttons.

Selecting either of these buttons will display a list of the available macros.

There is also a checkbox **Include commands**. This checkbox will list the built in Word for Windows commands as well as any user macros.

Once the list of macros is displayed the selected macro is placed in the edit box.

**Limitation:** the list of macros will not appear sorted. User macros are sorted according to their creation. The internal macro/commands are sorted according to some inscrutable whim on the

part of the Word Development Team.

5) a ListBox of available icons.

Since *Word for Windows* dialog boxes cannot contain bitmaps, there is no way to actually include the toolbar icons. Since the **ToolsOptionsToolBar** does not act like other dialog boxes (none of the ToolsOptions dialog boxes do), you can't use it to display and then grab the selected icon.

Therefore, the list box in this macro displays the number of the tool (-1 to 104) and a short description.

6) a group box that contains one (if this is a NORMAL document) or two (if it is a template document) option buttons to determine *where* to store the changes: in NORMAL.DOT or in the template.

# ChooseDirectory

ChooseDirectory began life in response to a WordPerfect user. Someone on the Word for Windows forum of CIS complained that Word version 1.x did not provide an easy way to specify a default startup directory. I set out to prove that not only could Word open in a specified directory, it could go one better and provide an easily customized list of alternate startup directories. I was told by the Word programmer's that ChooseDirectory was the first significant macro written by an end-user, and that it made the rounds in Redmond. A version was published by PC-Computing. With each iteration, new features and new smarts have been added.

ChooseDirectory 3.0 adds some significant enhancements: The list is larger, there are now Cut and Paste buttons, new items are added at the point of the selection, there is a sort button, CD now uses a dedicated INI file (rather than writing to a section of WIN.INI). Three support macros are also included in this release.

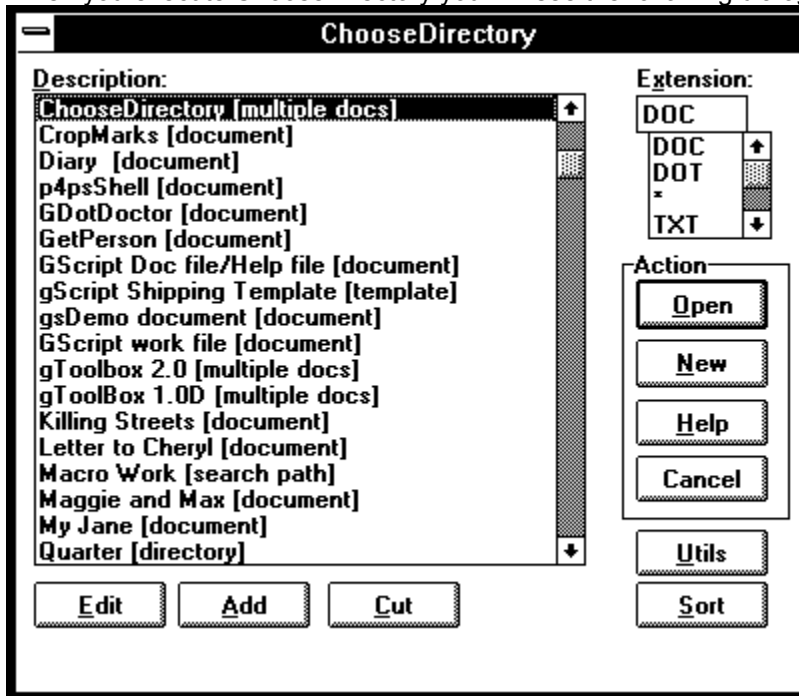
This version is specific to Word for Windows version 2.0x. It will not work with earlier versions of Word for Windows.

## **Related Topics:**

[ChooseDirectory: Dialog Box](#)

## ChooseDirectory: Dialog Box

When you execute ChooseDirectory you will see the following dialog box:



### Description

This listbox contains plain English descriptions that point to a directory, a search path, a document, or multiple documents. The description should be chosen carefully to reflect the underlying load command.

### Extensions

This combo box contains a list of extensions to use when you open a directory. The default is DOC (or whatever you have specified as the DOC-Extension in your WIN.INI). If you type in an alternate extension that is not already in the list, it will be saved for future use by ChooseDirectory.

(To remove an extension from the list, simply type the extension prefaced by a minus sign: e.g. **-TMP**. See "Extensions" on page 5.)

### Open

Selecting this option button executes a different function depending on the current selection. The description can "point to" a directory, a single document, multiple documents, or a search path.

If the description points to a path, ChooseDirectory will display the FileOpen dialog in that directory.

If the description points to a document, ChooseDirectory will open that document.

If the description points to multiple documents, ChooseDirectory will open all specified documents.

If the description points to a search path, FileFind will run using that path specification as the SearchList.

### New

Selecting this button changes to the directory pointed to by the description, and then executes FileNew.

### Help

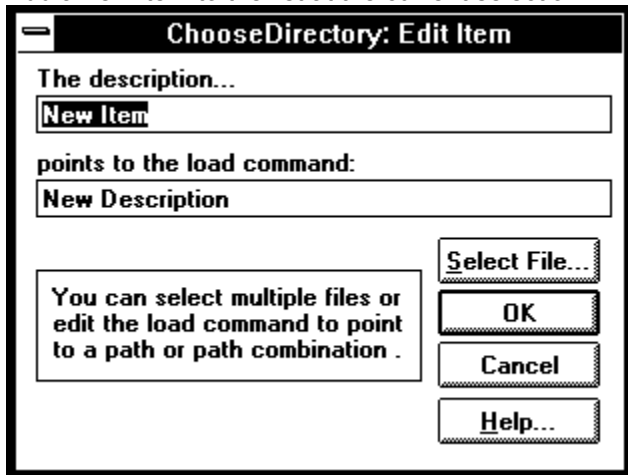
Loads the gToolBox help file at the ChooseDirectory topic.

### Edit

Edit the currently selected item.

### Add

Add a new item to the list at the current selection. You will see the following dialog box:



Below is a table of the variations allowed in the load command line and the corresponding action when the Open or New buttons are selected:

<b>Load Command</b>	<b>Open</b>	<b>New</b>
C:\WINWORD	FileOpen	FileNew
C:\WINWORD\MYDOC.DOC	Open the document	FileNew
C:\ONE.DOC+C:\TWO.DOC	Open both documents	FileNew
C:\WINWORD;	FileFind	FileNew
C:\WINWORD;C:\WIN	FileFind	FileNew first directory
C:\WINWORD\*.*;	FileFind on path with extension	FileNew

- If the load command is a directory, [directory] will be added to the description.
- If the load command is a multiple path specification, [search path] will be added to the description.
- If the load command is a document, [document] will be added to the description.
- If the load command points to multiple documents, [multiple docs] will be added to the description.
- If the load command points to a template (DOT), [template] will be added to the description.

### Select File

Selecting this button will display the FileOpen dialog box. This allows you to select a file to add to the load command.

To have ChooseDirectory work on just the path you have selected, be sure to remove the file name that is inserted (and the final backslash)

To do multiple paths remember to add a semi-colon between paths. (Note that if you wish to run FileFind on a single directory, you must end the load command with a ";".)

To do multiple documents remember to add a plus sign between file names.

### Help

Loads the gToolBox help with information about editing and adding items.

**Cut**

Selecting this option simply removes the currently selected description/path from the list.

Note: there is no confirmation.

The "cut" item (that is, the description and load command pair) is stored in a temporary buffer.

**Paste**

Pastes the contents of the buffer at the current highlight location. Used with the Cut command this allows you to move individual items.

Note: This button does not appear until you have selected Cut.

**Sort**

This command sorts the description list alphabetically and writes the new order to disk.

**Related Topics:**

[Utils](#)

[The CDIR.INI file](#)

[Installation Tips](#)

[Extensions](#)

[Warning:](#)

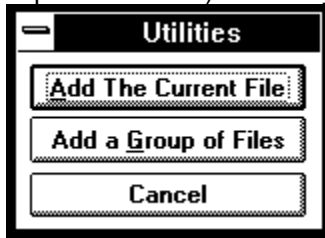
[FileSummaryInfo](#)

[UpdateVer2To3](#)



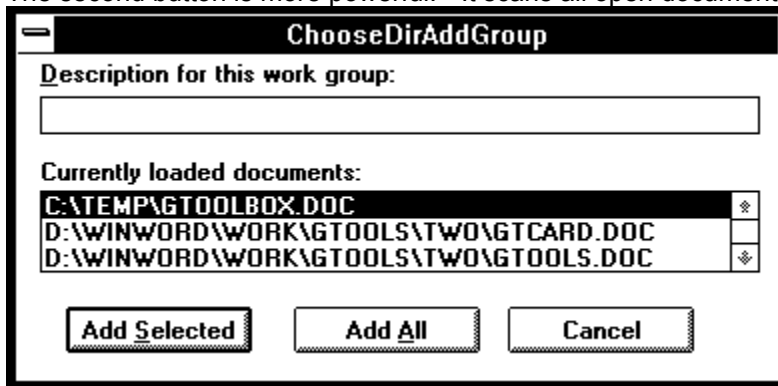
## Utils

This button combines two useful utilities (which in version 3.0 of ChooseDirectory were distributed as separate macros). When you select this button you will be presented with the following dialog box.



The first button is pretty self-explanatory. It presents you with the edit box, with the current document's title and full path as the default information.

The second button is more powerful. It scans all open documents and presents you with a list:



You can add individual files from the group or the entire group.

## **The CDIR.INI file**

ChooseDirectory uses a series of keywords stored in a dedicated INI file named CDIR.INI. If you are installing ChooseDirectory for the first time, this file will be created in your Windows directory, containing the following example settings.

```
[ChooseDirectory]
Count=7
Extensions=4
[Items]
1=All Files in Winword [search path]c:\winword\*.*;
2=Block Letter [template]C:\WINWORD\LETBLOCK.DOT
3=Example Macro [document]C:\WINWORD\NEWMACRO.DOC
4=Product Support Macros [document]C:\WINWORD\PSS.DOC
5=PSS and NewMacros [multiple docs]C:\WINWORD\NEWMACRO.DOC+C:\WINWORD\PSS.DOC
6=The ReadMe Doc [document]C:\WINWORD\README.DOC
7=Windows and WinWord [search path]c:\win\*.*;c:\winword
[Extensions]
1=DOT
2=*
3=TXT
4=WFW
```

CDIR.INI must be located in your Windows directory. It can be edited directly using NOTEPAD.EXE (or any other text editor).

### ***Installation Tips***

To have ChooseDirectory run every time you start Word for Windows, simply either add the following line to your current AutoExec macro (or create one if none exists):

```
ToolsMacro "ChooseDirectory", .Run
```

You should also assign ChooseDirectory to both a menu and a key combination.

## ***Extensions***

### **Specifying an extension**

You can add a specific extension to a path. For instance, if the description "My templates" points to a path in the following form:

```
C:\WINWORD\DOT\*.DOT
```

Then upon execution this will run FileOpen on the C:\WINWORD\DOT directory, with \*.DOT as the filter.

Note: the bracketed "type" description generated by ChooseDirectory will still read [document].

Similarly, you can add an extension to the items in a multiple path, as follows:

```
C:\WFW\*.DOC;C:\DOT\*.DOT
```

Upon execution, FileFind will run with this as the SearchPath.

Note: the bracketed "type" description generated by ChooseDirectory will still read [search path].

### **Deleting an extension from the list**

When you specify an extension, it is added to the list. To remove an extension from the list, run ChooseDirectory and type in the extension you wish to remove prefaced by a minus sign: e.g. . -TMP.

### **Sorting the extension list**

Extensions will be displayed in the list in the following order: DOC will always come first; the remaining extensions will display in the order you entered them.

To re-arrange the alternative extensions you must edit the extension lines in the CDIR.INI file, which can be found in your Windows subdirectory.

**Warning:**

The CDIR.INI lines that contain the description/path specification **must** contain text on either side of the vertical bar (otherwise an error will be generated). This version of ChooseDirectory contains error checking to make it very difficult to incorrectly install these lines, however, nothing is fool proof... If you get an error when first running the macro, please check your CDIR.INI (using NOTEPAD) and examine the section following [extensions]. If you see a line with nothing to one side of the vertical bar, such as --

1=Main Directory|

-then you know there is a problem. Add the missing information manually.

### ***FileSummaryInfo***

This is a replacement for the internal FileSummaryInfo macro. After calling the normal dialog box to fill in Title, Subject, etc, you will be prompted whether or not to add this document to the ChooseDirectory list.

### ***UpdateVer2To3***

If you currently use a earlier version of ChooseDirectory (prior to 3.0) this macro will copy the settings contained in WIN.INI to the new configuration file CDIR.INI.

The settings in WIN.INI are *not* automatically deleted.

You do not need to install this macro. Simply execute it once, using the Test button from the installation dialog box.

# ControlRun

This macro is an adaptation of a macro posted by Doug Timpe for WfW 1.1. The only major change is the use of PushButtons instead of CheckBoxes.

It replaces completely the built in command named ControlRun. The advantage of this macro over the built in macro/command is that you can modify this macro to include frequently used program, and it has a text edit box into which you can enter any legal command.

## Related Topics:

[ControlRun: dialog box:](#)



## **ControlRun: dialog box:**

By default the dialog box consists of a text edit box and four buttons.

You can enter any legal command into the edit box.

The PushButtons are

**Clipboard**

**Control panel**

**Dialog editor**

**Cancel**

You could modify this macro to include other frequently run programs.

# CopyMacros

In version 1.x of gToolBox this macro was named **CopyMacroActive**.

In my own work with macro development, this has proven one of the most useful tools in my NORMAL.DOT.

This macro will build a list of all the macros in the current context -- either the global macros or the macros in the reigning template -- and then build a second list of all the *other* templates that are currently loaded into *Word for Windows*, and allow you to choose a macro to copy and a destination template.

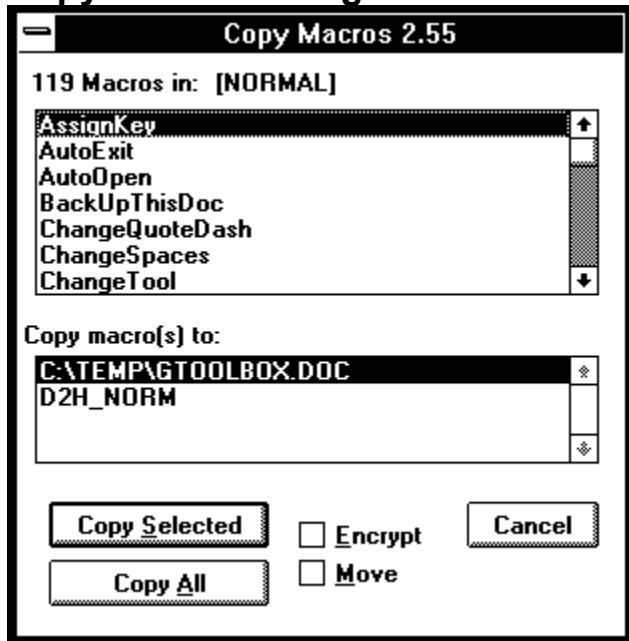
For example, if you are working on a letter in LETTER.DOT, and you have a document based on MEMO.DOT also loaded, running this macro will display a list of LETTER.DOT's macros and allow you to copy any or all of them into MEMO.DOT with a single click.

You can also encrypt the macro en route.

## Related Topics:

[CopyMacros: dialog box](#)

## CopyMacros: dialog box



The dialog box consists of two list boxes, two buttons, and one checkbox.

### Macros in (templatename)

This list displays all of the macros in the active template at the time of executing **CopyMacroS**.

### Copy macro(s) to:

This second list box will display the possible destination templates (it gathers them by cycling through all open document windows and determining the rulling template. Therefore if there is only one document open the macro will exit).

### Copy Selected

This button copies only the currently selected macro (and then moves the selection to the next macro in the list).

### Copy All

This button will copy all the macros in the list to the selected destination template.

### Encrypt

This check box, if active, will encrypt the macro during the copy process.

### Move

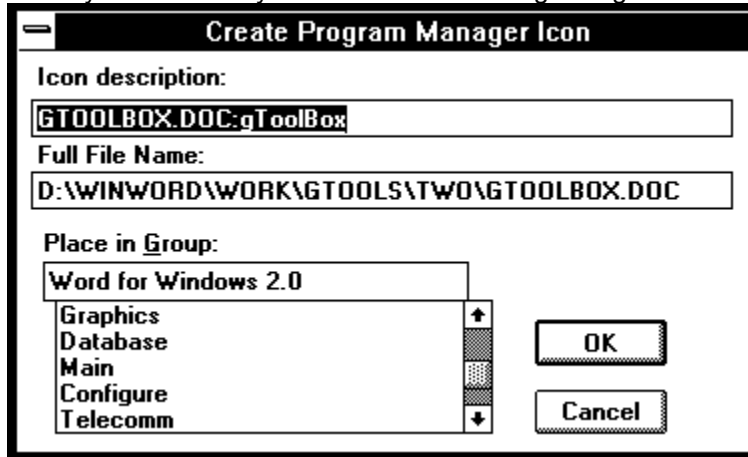
If this check box is selected, the macro will be deleted from the source template after the copy is completed.

*Note: neither the Encrypt nor the Move checkboxes are "persistent." That is, you have to check them for each copy.*

## CreatelconThisDoc

This macro provides an easy way to add the current document to the Program Manager.

When you execute it you will see the following dialog box:



By default the propose group is Word for Windows 2.0 (the group created when you install Word for Windows). You can select any group from the combo box or enter a new group.

# CreateOutlineDoc

This macro allows you to save only the heading text from a document to a second "outline" document.

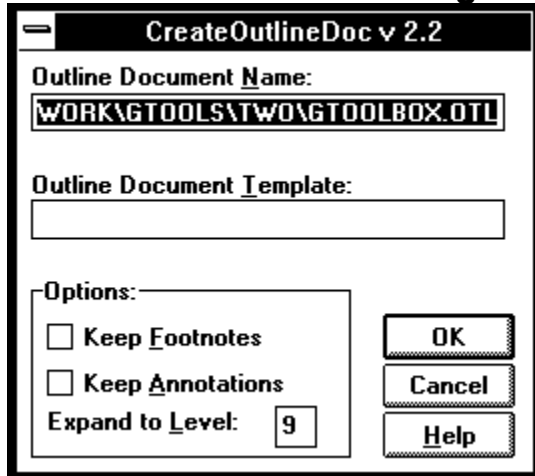
Why? When you collapse a *Word for Windows* document into Outline View and then select the outline, you are actually selecting all the text and levels beneath the visible outline. If you were to cut and paste to a second, blank document you would be copying everything.

This macro allows you to create a document that reflects *only* the outline organization of its source document.

## Related Topics:

[CreateOutlineDoc: dialog box](#)

## CreateOutlineDoc: dialog box



### Outline Document Name

This is the name used to save the newly created outline document. By default the name will be the file name portion of the document being converted with the document extension OTL appended.

By default the OTL file will be saved in the same directory as the source document.

If you wish to change either of these defaults, type the filename desired, or the full path desired, in the edit box.

### Outline Document Template

By default the new document will be based on the same template as the source document. If the source document is a template itself, then the destination document will be based on NORMAL.DOT.

If you have a standard outline template, you can enter it into the macro as the default. For example, if you have a template named OUTLINE.DOT used for all outlines, simply locate and change the line

```
dlg.Template = Template$
```

to

```
dlg.Template = "OUTLINE"
```

found at the beginning of the macro CreateOutlineDoc.

### Keep Footnotes

#### Keep Annotations

Simply check the appropriate box to include footnotes and/or annotations in the new document.

Be aware that the footnotes numbering will not be the same as the numbering in the original document since the footnotes that are in the text are ignored.

Also, be aware that footnotes that do not have automatic numbering will be ignored.

### Expand to level

You can specify how many levels of the outline you wish to preserve during the copy process.

# DeleteldleStyles

This macro is useful if you have overloaded a document with unused (and sometimes unknown...) styles.

This can happen when you convert from another word processor to *Word for Windows*, or when you combine documents from several different sources, or when you merge styles from another document or template (but don't want all the styles to remain in the current document).

Unfortunately, there is a limitation. There are several (thirty odd, I think) built in style names:

- annotation reference, annotation text, footer, footnote reference, footnote text, header, heading 1, heading 2, heading 3, heading 4, heading 5, heading 6, heading 7, "heading 8, heading 9, index 1, index 2, index 3, index 4, index 5, index 6, index 7, index heading, "line number, Normal, Normal Indent, toc 1, toc 2, toc 3, toc 4, toc 5, toc 6, toc 7, toc 8, EnvelopeAddress, EnvelopeReturn

Often you will see that a document that starts out with only Normal, Normal Indent, and Heading 1-3 suddenly has a list containing **all** of the above style names.

There is no way to remove these styles from the style list once they appear. This is a *feature* in *Word for Windows*. Write Microsoft...

When you run this macro you will be given an opportunity to cancel.

Be careful **not to run** this macro unless you are sure that all the style names you wish to retain are actually in use in the document.

## **Another Note:**

There is no reason (that I can think of ) that you couldn't remove user styles from a template by following these steps:

- Load the DOT file directly.
- Examine the user styles in the template
- Apply those you wish to keep to separate paragraphs
- Run the macro

## EncryptMacros

This macro will display a list of macros in the currently active template and either encrypt all the macros, or allow you to specify which of the macros to encrypt

WARNING: once a macro is encrypted, it cannot be unencrypted. BE SURE TO HAVE AN UNENCRYPTED VERSION OF ANY MACRO YOU ARE DEVELOPING BEFORE ENCRYPTING IT.

See [EncryptTemplate](#)



## EncryptTemplate

This macro will ask you to choose a template, and then will encrypt every macro in that template.

Note: it does not pause for confirmation. When you load a template the macros contained in that template are encrypted. The macro does not, however, automatically save the newly encrypted template. So you do have the opportunity to discard the changes.

WARNING: once a macro is encrypted, it cannot be unencrypted. BE SURE TO HAVE AN UNENCRYPTED VERSION OF ANY MACRO YOU ARE DEVELOPING BEFORE ENCRYPTING IT.

See [EncryptMacros](#)

# FiddleNotes

This is a simple macro that has four options:

- Change all footnotes to annotations
- Change all annotations to footnotes
- Delete all footnotes
- Delete all annotations

There is only one caveat: Footnote References and Annotation References must all have the same style. A buglet in *Word for Windows* allows for styles in such references to get out of kilter (since changing a reference style does not apply retro-actively).

Another macro in this package addresses this problem.

See [ReinsertFootnotes](#)

# FileFind

This is a replacement macro for the built-in FileFind command. If you wish to have this macro separate from the built-in command simply install it and then rename it to something other than FileFind.

One of the biggest limitations with the built-in FileFind command is that it provides no way to start a search in a specified directory and search all subdirectories. The process of building a search path can be tedious. And searching the entire drive takes way too long (and isn't very efficient).

That's why I wrote this replacement macro.

## Related Topics:

[FileFind: Dialog Box](#)

[FileFind Notes](#)

[FileFind Acknowledgments](#)

## FileFind: Dialog Box

When you run FileFind you will see a dialog box with familiar components.

The dialog box is titled "FileFind From Here Down". It shows the current directory as "D:\WINWORD\DOT\". The "File Name" field contains "DO?". There are several text input fields for "Title", "Subject", "Keywords", "Any Text", "Author", and "Sayed By". There are two date selection boxes: "Date Created" and "Date Saved", each with "After" and "Before" sub-fields. On the right, there are two group boxes: "Sort Files By" with radio buttons for "Author", "Creation Date", "Last Saved By", "Last Saved Date", "Name" (selected), and "Size"; and "List File Name With" with radio buttons for "Title", "Content", "Summary Info" (selected), and "Statistics". At the bottom, there is a "Search What" group box with radio buttons for "Here and Below" (selected), "Here Only", and "Last Path". "OK" and "Cancel" buttons are located at the bottom right.

It contains most of the fields found on the Search and Options dialog boxes of the built-in FileFind. You can specify File Name (the specification to limit the search), Title, Subject, Keywords, Text, Author, Saved by, Save Date, Creation Date. In addition to these text edit boxes there are two group boxes for sort criteria and view options.

The two sections of the dialog box which are unique to FileFind are the Pushbutton labeled "Pick Starting Directory..." and the group of option buttons labeled "Search Where". Here's some detail:

### Pick Starting Directory

This button will bring up a secondary dialog box that contains a list of subdirectories. This dialog box allows you to change the currently logged directory by either double clicking on the directory to move to or by selecting a directory with the mouse and clicking on Change.

Note that the double-dot {..} refers to the parent directory. This will always be the first item in the list (when you are not in the root directory). Selecting it moves you up the directory tree one level.

### Search Where

This group box presents three options:

**Here and Below** - This is the default. A search path will be constructed from the current directory down.

**Here Only** - This will cause FileFind to be executed on the current directory only.

**Last Search** - This will simply call the internal FileFind command with the search path and criteria entered the last time you ran FileFind.

## FileFind Notes

If your starting directory is the root of a disk drive, the entire drive will be searched without building a list of all subdirectories.

If you select "Here Only" in the Search Where option box, only the current directory will be searched.

If you select "Last Search" in the Search Where option box, the internal FileFind command will be executed *using whatever criteria and search path was used the last time you ran either the internal FileFind or this macro.*

Due to a bug in FileFind, the File Name (the wild card specification) is not accessible from a macro. That is to say, all of the starting search criteria from the last search will be proposed for the current search *except* the file name. By default this is hard-coded to \*.DO?. If you want to change this default, look for the line:

```
Name$ = "*.DO?"
```

At the top of the macro and change to suit your preferences.

There seems to be a bug in FileFind when you are sorting files from a complex search path by name. I haven't yet figured out why they don't get sorted properly.

Logically enough, the time it takes for this macro to execute is directly proportional to: 1) the depth of the directory tree, and 2) the generality of the search criteria.

## **FileFind Acknowledgments**

This macro would not have been possible (for this writer) without the work of Scott Krueger. His experiments in using Windows API calls to do things otherwise impossible in WordBasic enabled both the navigation of the directory tree and the collection of all subdirectories.

Keep an eye out for KDialogs. This will be Scott's package of routines to create fancier and more functional dialog boxes.

And to Annie Furrer for asking the question that got me thinking about this again.

# FileTemplate

## Problem: automatically merging styles

Templates are the repository of several useful aspects of *Word for Windows*. If you aren't comfortable with the idea of a Template or the concept of Context, I strongly suggest you stare at the manual until it's clear.

Templates hold Macros, IconBar assignments, Key Assignments, Menu Assignments, Glossaries, and Styles.

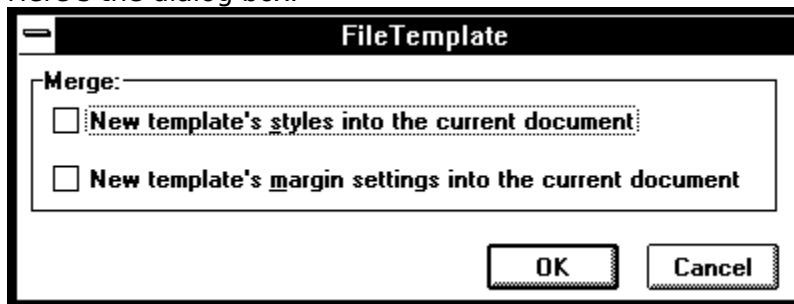
When you attach a template, or change the attached template, using the new **FileTemplate** command (used to be **FormatDocument.Template...**) you essentially change which of these assignments will now have sway over your document. That is, with the exception of styles.

Changing a template does not automatically change the style definitions in the current document.

The reason for this is that there are two separate lists of styles—those contained in the Template (where you probably defined the style) and those contained in the document itself.

The included replacement for **FileTemplate** asks if you wish to change the current documents styles to match those contained in the template just selected for attaching...

Here's the dialog box.



Activating the first of the two checkboxes would perform the exact equivalent of selecting **FormatStyle, Define, Merge**, selecting the same template as that chosen in the FileTemplate dialog box, and selecting **To**.

For those of you who know the macro language, the short hand for this would be:

**FormatStyle .FileName = Template\$, .Merge, .Source = 1**

Merging styles *replaces* any styles in the document with styles in the template of the same name. That is, Normal in the document would now look like Normal from the template. Styles that don't already exist in the document will be *added*.

See also [SyncStyles](#).

The second check box will copy the margin settings from the attached template into the document. It does this by actually loading the document, examining the values contained in FormatPageSetup, and then applying those values to the current document.

# MacroKey

Overview:

Allows simple assignment and removal of key stroke combinations to macros (either global or template bound).

Enhancements over the built in MacroAssignToKey:

Allows the use of Alt+Char, Alt+Ctrl+Char, and Alt+Shift+Char. In the built in routine the first two combinations are disallowed. The last is reserved for *Word for Windows*'s use. Note that *Word for Windows* reserves these key sequences for it's own use in many cases, so preventing you from reassigning them is a form of protection. Use this routine cautiously, and backup all DOT files before you experiment.

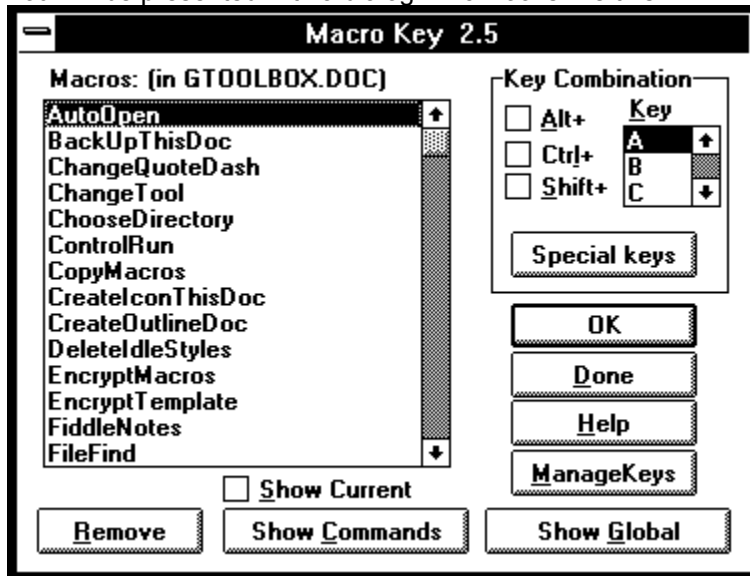
## Related Topics:

[MacroKey: dialog box](#)



## MacroKey: dialog box

You will be presented with a dialog which looks like this:



The line above the list of macros will display the current template or document/template containing the macros.

By default MacroKey displays the template macros (if there are any).

### Macros

A Listbox of macros from the currently selected context. Select the macro you wish to assign a key to (or remove a key from).

### Key Combination

Check the shift keys you wish to activate (Alt, Ctrl, Shift, in any combination), and then move to the Key list box and select the alphanumeric key you wish to assign to the selected macro.

### Buttons

#### Show Global

Displayed only if the current context is a template (and therefore Global macros are not visible) Selecting this button changes the list to display the macros from NORMAL.DOT.

#### Show Template

This button is Displayed only if there *is* a template attached to the current document.

#### Show Commands

Selecting this button will display **all** of the built in command macros. Note, building a list of all macros—user and internal—takes a fairly long time.

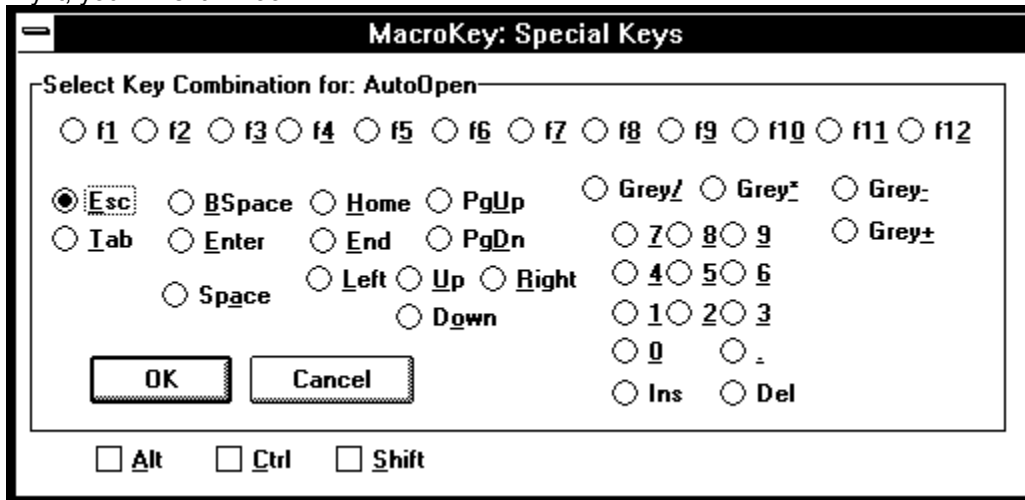
#### Manage Keys

This button will run a second macro (assuming it is installed) named **ManageKeys**. This macro will display a listbox of the current key assignments, and, optionally, allow you to create a document containing a table of those key assignments.

See [ManageKeys](#)

### Special Keys

choosing this button will display a dialog box of all supported special keys (Esc through Del...F1 ...F12). Try it, you'll like it. Look:



### Remove

this option checks to see if the currently selected macro has a keycode assigned to it. If so you are asked if you want to remove it. If not, a message displays at the bottom of the screen.

### CheckBoxes

Show Current

This check box will rebuild the list of macros, displaying the current key assignment (if any). This takes a significant amount of time. This function only shows key assignments made by the user, not key assignments that are internal to *Word for Windows*.

### Related Topics:

[Limitations:](#)

## **Limitations:**

**MacroKey** will warn you if you are about to use a key combination that is already assigned to a macro. However, it will only warn you if the key combination in question is **NOT** one of the default assignments. That is, it must be an assignment you have made, rather than one that *Word for Windows* assumes is the case.

Similarly, it does not warn you if you are about to use a key combination that is assigned to a style.

## **Illegal keys**

It seems that any combination of keystroke with F1 will always call help. So it isn't fair game.

It seems that NumPad 5 (the numpad 5 that is activated by turning NumLock ON) does not accept shift characters. The NumPad 5 that is active in default state (NumLock OFF) does accept shift characters. The macro accounts for this oddity. Also note that the Unshifted NumLockOFF-5 cannot be assigned to a macro (this is the key, by the way, that is described as KeyCode 12 in the Technical Reference).

The direction keys, listed on the Special Keys dialog box, have some limitations.

No direction keys (Home, End, PgUp, PgDn, Right, Left, Down, Up) can be assigned to a macro.

No direction key plus Ctrl can be assigned to a macro.

No direction key plus Ctrl+Shift can be assigned to a macro.

The Alt key plus Up and Down are legal. The Alt key plus Left and Right are not legal.

**MacroKey** will not allow you to assign anything to Ctrl+Alt+Del (duh...)

**MacroKey** works best on a document, not on a template. That is, if you are editing a template directly there may be trouble. Base a blank document on the template and try again.

**New in this version:** version 2.55 adds a number of enhancements to MacroKey

- Macros are now sorted in the list box (thanks to Scott Krueger's sort routine)
- MacroKey protects you from inadvertently assigning a macro to an unshifted key, either alphanumeric or function key.
- MacroKey now checks the global context (if you are assigning a macro a key combination in a template) to see if there is a conflict and prompts for confirmation.
- MacroKey now checks for a conflict between a proposed assignment and the default Word for Windows shortcut keys. You can still use these keys, but now you know when you are doing so.

# MakeBook

A slightly more complicated version of MakeWordBook, this macro takes the current selection and presents it for editing.

Instead of grabbing the current word if there is no selection it grabs the first 17 characters for the current line.

It presents the multi-word selection as a proposed bookmark, with spaces converted to underline marks

It also checks for illegal characters (punctuation marks and the like) and replaces them with underscores.

See [MakeWordBook](#)

# MakeWordBook

This macro will first check to see if there is a block of text selected. If so, that selection will be inserted as a bookmark name.

If there is no selected text (just an insertion point cursor), then this macro will take the current word and make it a bookmark name.

This macro will check for duplicate bookmark names and append the instance count to the word if there is already a bookmark using the word as the mark. It does not, however check for illegal punctuation marks in the current selection.

For example, if the current word is "Testing", the first time MakeWordBook is run it will create a bookmark named "Testing". The second time it is run it will create a bookmark named "Testing01" and so on.

See [MakeBook](#)

# ManageKeys

This macro will display the current key assignments for the active context. If you are currently working on a document based on NORMAL.DOT, it will display the "global" key assignments. If you are working on a document based on LETTER.DOT, it will display the key assignments specific to the template LETTER.DOT.

The dialog box look like:



## The List Box

The list box displays three pieces of information:

- The macro that has a key assignment
- The mnemonic for the key combination
- The keycode for the key combination

For instance, in the above list, the macro **NextWindow** is assigned to Ctrl+Tab, which is keycode 265.

## Buttons:

### Create Key List

This button will create a new document (based on NORMAL.DOT) and generate a table containing all of the key assignments.

### Delete Selected

This button will remove the currently selected key assignment.

**Note:** It is possible for key assignments to appear in a template with no macro (apparently) associated with that key combination. This can happen if a macro is assigned to a key and then deleted. This has also been known to happen when installing Microsoft's version of SmartQuotes.

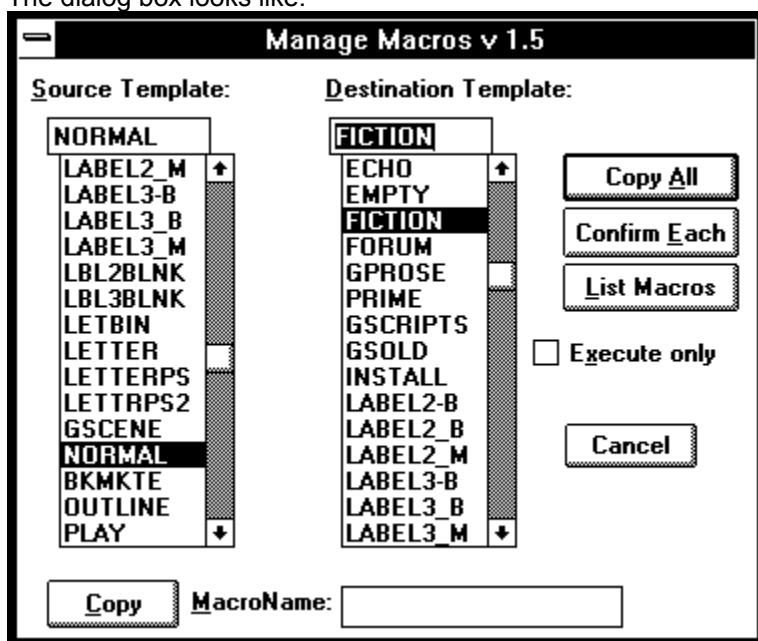
If you see a line in the above list box that begins with the phrase "bogus or style" then either the keycode is assigned to a style (in the FormatStyle dialog box), a macro has been deleted, or an unsupported key combination was somehow generated.

# ManageMacros

This is the original "copy macro" macro for *Word for Windows 2.0*. A slightly different version exists in the *Using WordBASIC* companion disk.

It differs from **CopyMacros** in that you can specify both the source and destination templates (neither has to be currently open).

The dialog box looks like:



## Source Template

A list box of all the templates in your DOT-PATH.

## Destination Template

The same list of templates

You must specify both a source and a destination template.

You can type a template name directly into the edit portion of the ComboBox.

The buttons available (after selecting the templates) are:

### Copy All

This button will open the working templates and copy all source macros to the destination in one pass.

### Confirm Each

This button will begin the process of copying all macros from source to destination but will pause at each macro for confirmation.

### List Macros

This macro will display a list box of macros in the source template.

### Copy

This button is only relevant if you have entered a macro into the editbox to the right. This is useful if you wish to copy only one macro and you know the macro name.

You can also, optionally, encrypt the macro en route from source to destination.

**Limitation**

The templates do not display in the list in alphabetical order. The more templates you have, the slower the macro is to load.

In order for the templates to display sorted alphabetically, you must physically sort them on your hard disk with a utility such as Norton's DiskSort.

See also [CopyMacros](#).



# OpenMRUList

A simple macro that simply opens all the documents found under the File menu (the Most Recently Used List).

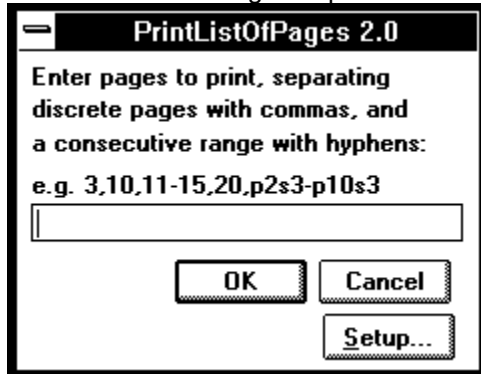
I would be useful as a startup command from Program Manager:

```
C:\WINWORD\WINWORD.EXE /mOpenMRUList
```

--would start *Word for Windows* and open the files on the MRU list.

## PrintListOfPages

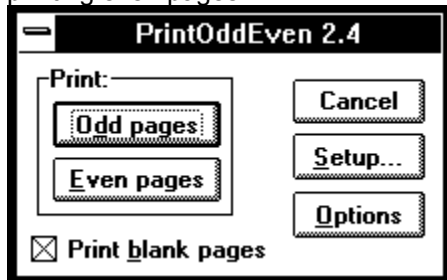
Although FilePrint allows you to print a single range of pages, it does not allow you to specify a list of single pages, or more than one range at a time. Here is a macro named PrintListOfPages that allows you to create a list of ranges to print:



The list of pages to be printed must be entered in the following format: single pages are separated by commas (for example: 1,6,10); consecutive ranges are entered with a hyphen between starting and ending pages (for example: 7-20); references to specific pages within a specific section are in the same format as that acceptable to FilePrint (for example: p2s3 or p1s3-p20s3). Like PrintOddEven, PrintListOfPages allows you to run the built-in FilePrintSetup.

# PrintOddEven

Printing all odd or all even pages in a single pass is extremely useful for those of us who would like to conserve paper and print drafts on both sides of a sheet of paper (and do not have "duplex" printer). It allows you to print a single document twice, first printing odd pages, re-inserting the pages, and then printing even pages.



Limitation: if your current printer is attached to the Windows Print Manager application then every time you call FilePrint Windows generates a temporary file, a "spool file" on disk (in the directory specified by the environment variable Temp if one is defined). The Print Manager can only handle twenty discrete print jobs at a time. Since this macro steps through the entire document and prints each page (odd or even) as a separate print job, it is possible that you will exceed this limit. The chances of a "print over-run" are lessened by setting the Print priority to high in the Print Manager. Another possible solution is to temporarily disconnect the current printer from the Print Manager via the Control Panel.

Note: PrintOddEven steps through the current document, skipping to every other page. If you have a section that starts with an odd page number following a section that ends with an odd page number, this macro will get bollixed up on the "odd section." PrintOddEven prints every other *physical* page in the document, without reference to the *virtual* page number.

# ReInsertFootnotes

## Note on Footnotes:

If you change the character style definition of a footnote (or an annotation reference) instances of footnote references inserted *prior* to the re-definition will not change. Subsequent footnote insertions will have the new attributes.

For example, if you begin inserting footnotes with the character definition of Red and Hidden, then change it to Blue and non-hidden, the already inserted footnotes will not change to the new style.

Another manifestation of this problem arises if you select a paragraph that has a footnote in it, and press Ctrl-SpaceBar to reset the character formatting.

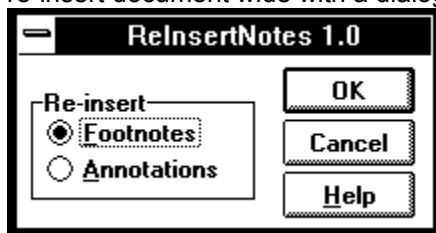
The included macro, ResetFootAnnote does not, like the other gFixes, replace a built in command. It is a new command which you can execute in order to reinsert a footnote or an annotation.

## How it works

There are two modes of operation:

If the insertion point is currently positioned on a footnote reference or an annotation mark the macro will re-insert *that footnote or annotation only* and then stop.

If the insertion point is **not** on a footnote reference or an annotation mark, it will prompt you for which to re-insert document wide with a dialog box:

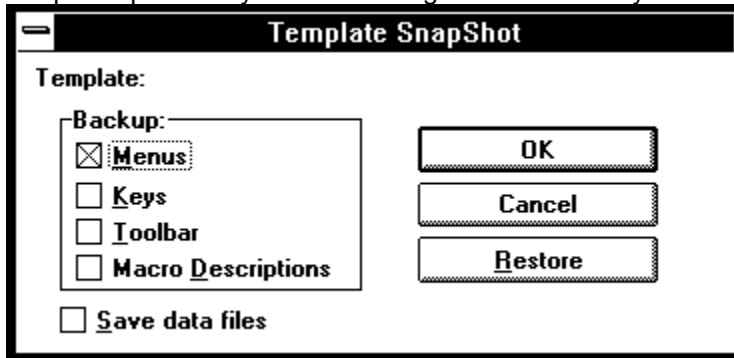


See also [FiddleNotes](#)

# Snapshot

SnapShot is a utility macro that examines the current template's customizations and creates macros that can be used to restore those customizations should the need arise.

SnapShot presents you with a dialog box from which you choose any of four template aspect to backup:

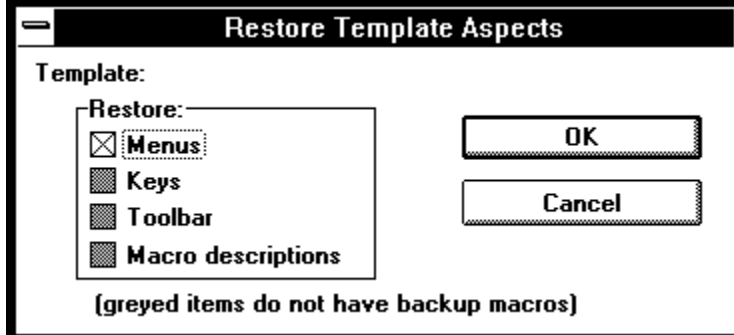


For each of the chosen aspects a macro will be created in the current context with the name TemplateNameAspectName.

For example, if the ruling template is LETBLOCK.DOT and you take a snapshot of menus, you will end up with a macro named **LETBLOCKMenus** in LETBLOCK.DOT that contains the WordBasic commands reflecting the current menu customizations. If you take a snapshot of the key customizations, a macro named **LETBLOCKKeys** will be created.

If the aspect item name has an asterisk this indicates that there is already a snapshot macro.

Selecting Restore allows you to execute any of the existing aspect macros (aspects that do not have macros will be greyed).



## Related Topics:

[Data files](#)

[Purpose](#)

[SnapShot Notes](#)

## Data files

In the process of building the aspect macros, SnapShot creates four data files, stored in the same directory as the template, with the following names:

Menus: *TEMPLATE.MNU*

Keys: *TEMPLATE.KEY*

Toolbar: *TEMPLATE.BAR*

Macro Descriptions: *TEMPLATE.DSC*

(Where *TEMPLATE* is the filename of the current template. For example, working with LETBLOCK.DOT SnapShot would create LETBLOCK.MNU.)

By default these files are deleted after SnapShot builds the aspect macros. You can instruct SnapShot to save these files by checking the Save data files box. This would allow you to print a listing of the various template customizations.

## **Purpose**

### **Rescue**

The primary reason to use SnapShot is to counter the effects of a bug in Word for Windows 2.x. Under low memory conditions, or if you use FileSaveAll with macros open from several contexts, your menu customizations can be wiped out.

Microsoft is aware of the problem -- and we can hope will fix this in the next release of Word.

I have also seen macro descriptions vanish.

### **Information**

The macros and data files created by SnapShot are useful purely for informational purposes. It's an easy way to see what's contained in a template.

### **Refinement**

And for those who are comfortable with WordBasic, the macros generated by SnapShot provide an easy way to refine the customizations.

You could edit the macros directly, adding speed keys to menus, for instance, or editing all macro descriptions.

You could use the SnapShot macros to build a template from scratch (or rebuild the current template). You could mix and match aspect macros from different templates to create a new template.

## **SnapShot Notes**

If you are editing a template directly or are in the global context (ruling template is NORMAL.DOT) the changes to the template (in the form of the aspect macros) will not be saved automatically. You will be prompted when you close the template whether or not to save changes.

If you are editing a document based upon a template other than NORMAL.DOT, the changes will be saved automatically.

The table created for Keys contains a third column listing the mnemonics for each key code. This is purely informational.



# SyncStyles

This simple macro does the equivalent of `FormatStyle.Option.Merge`. It is useful if you want to make sure that the styles in a document are always also stored in the template; or if you want to reset the styles contained in the current document to the styles as they are defined in the template.

See also [FileTemplate](#)

## Related Topics:

[SyncStyles: dialog box:](#)

## **SyncStyles: dialog box:**

### **Copy TO**

If you select "Copy Document style TO template", you will, in essence, be merging the styles contained in the document to the current document template.

1. If a style exists in both the template and the document, the template definition is changed to match the current definition as it exists in the document.
2. If a style does not exist in the template, but does exist in the document, it is added to the style list of the template (that is, future documents based on that template will now have the additional styles...).

### **Copy FROM**

If you select "Copy FROM Template styles into the current document", you will be merging all of the styles contained in the template into the current document.

The effect of these actions is two fold:

1. If a style exists in both the template and the document, that style is changed to match the template.
2. If a style does not exist in the document, but does exist in the template, it is added to the style list.

## **ToggleClearScreen**

In version 2.0b, Microsoft introduced a new view option. On the ToolsOptionsView dialog box you can check "Full Screen" and have a clear workspace: no menus, no application title bar... just your document.

This macro makes accessing this command easier. It toggles the Full Screen option of ToolsOptionsView on and off.

If you are still using version 2.0 or 2.0a of Word a message will display on the status bar.

## **ToggleHidden**

Toggle View Hidden—without going through the ToolsOptionsView dialogue box. I suggest assigning this to Ctrl-Shif-H.

# ToggleOutline

Toggles in and out of outline mode.

## **TogglePictures**

Toggles the display of pictures and picture placeholders.

*Word for Windows* will scroll faster through a complex document if pictures are not displayed.

# ToggleRevision

Toggle revision marks on and off.

# ToggleStyleBar

Toggles the style bar on and off.



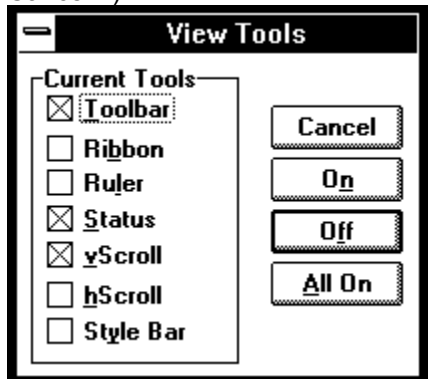
# ToggleViewTools

There are seven "tools" that can be displayed on the *Word for Windows* screen:

- Toolbar
- Ribbon
- Ruler
- Status
- Vertical Scrollbar
- Horizontal Scrollbar
- Style Bar

The first three are controlled under the **View** menu. The last four are controlled under the **ToolsOptionsView** dialog box.

This macro present a single, simple dialog box of seven checkboxes. It has three buttons (not counting Cancel...):



## Related Topics:

[Setting Tolerance for toggle](#)

[Setting default minimum for on:](#)

## Setting Tolerance for toggle

There is a line in the macro that determines how many options need to be set to on before the macro will assume you want the default action to be OFF.

That is, if three options are currently on, then make the default action for the push buttons to be Off.

If less than three are on, leave the default as On.

The line of code looks like:

```
If Total >= 3 Then St = 2 Else St = 1
```

## Setting default minimum for on:

If you examine the macro you will see that there is also a section you can customize to specify which group of options should be forced to on *if everything is already off...*

That code looks like:

```
If Total = 0 Then          b = - 1 : vt = - 1 : v = - 1
```

# ToggleWindow

Toggle the currently active document window split/zoomed.

## WindowCascadeAll

Arranges all open document windows in a cascading stack, leaving the title bars visible. There are two constants in the macro, HLap and VLap, which can be adjusted if the overlap does not suit your preferences.

The macro is not device dependent. It should work at all monitor resolutions.

*Note: in previous versions of gToolBox this macro was named WindowStack.*

# WindowStack

This macro will arrange two documents one atop the other. This is useful if you have multiple documents open and wish to "tile" only two of them.

The macro also allows you to specify, in increments of 25%, how much screen real estate to give to the top window.

The best way to get a feel for it is to use it.

## **WinSideBySide**

Arranges the document Windows side by side. If there are more than two active windows you are prompted for which window to arrange next to the currently active document.

# Overview

When you open **GTOOLBOX.DOC** you will automatically install the library of routines found in a macro called **GLIB**. This macro will be automatically copied to your **NORMAL.DOT**.

The reason for this is two fold:

- 1) *Word for Windows* version 2.0 allows one to call sub routines and functions contained in another macro. By placing several commonly used subroutines in one place, the other macros are smaller.
- 2) The subroutines and functions found in **GLIB** can be used by your own macros. In essence, it adds many new macro functions to WordBasic.

In order to use these functions in your own macros you simply must 1) make sure **gLib** is installed in your Normal.dot and 2) call the function prefaced by the library name: **gLib.FunctionName**.

## Warning

If you modify any of the routines in the **gLib** library, be sure to increment the version number as indicated at the top of the macro.

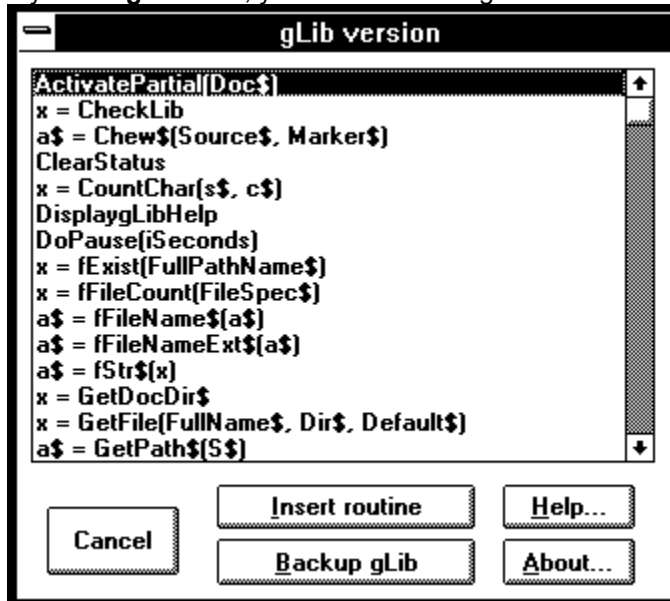
Subsequent installations of **gToolBox** (this version or a newer version) will check to see what the version number of the library is. If it is the same as the library to be installed nothing is copied.

If it is less than or greater than the library to be installed the current library will be copied to another macro named **gLibBAK**.



## Main dialog box

If you run **gLib** itself, you will see a listing of the subroutines and functions it contains:



The meaning of the buttons are as follows:

### **Insert routine**

Inserts the selected routine on the current line (if you are at the end of a paragraph) or on the next line (if you are not). This is extremely useful (and new to this version of gLib) if you are developing macros using the routines contained in the library.

### **Backup gLib**

This button will copy the current gLib to gLibBackup.

### **Help**

Load the gToolBox help file.

### **About**

Displays information about the author and the distributor of gToolBox.

# gLib Reference

[ActivatePartial\(Doc\\$\)](#)  
[CheckLib](#)  
[Chew\\$\(Source\\$,Marker\\$\)](#)  
[ClearStatus](#)  
[CountChar\(Source\\$, Char\\$\)](#)  
[DisplaygLibHelp](#)  
[DoPause\(Seconds\)](#)  
[fExist\(FullPathName\\$\)](#)  
[fFileCount\(FileSpec\\$\)](#)  
[fFileName\\$\(b\\$\)](#)  
[fFileNameExt\\$\(b\\$\)](#)  
[fStr\\$\(Num\)](#)  
[GetAppHandle](#)  
[GetCurrentTitle\\$\(hWnd\)](#)  
[GetDocDir\\$](#)  
[GetDocHandle](#)  
[GetFile\(FullName\\$,Dir\\$,Default\\$\)](#)  
[GetPath\\$\(Source\\$\)](#)  
[GetTemplate\\$](#)  
[gLibInstalled\(Macro\\$\)](#)  
[gMsg\(Msg\\$, Title\\$\)](#)  
[gQuery\(Msg\\$, Title\\$\)](#)  
[HasKey\(Macro\\$, Context\)](#)  
[Inject\\$\(Source\\$, New\\$, Place\)](#)  
[IsMacroPane\(IMacroName\\$\)](#)  
[KeyDescription\\$\(KeyCode\)](#)  
[IHelp\(HelpFileName\\$\)](#)  
[lcHelp\(ContextNumber,HelpFileName\\$\)](#)  
[ListMacros\\$\(Context,All\)](#)  
[LoopMsg\(Message\\$\)](#)  
[MacroExist\(Macro\\$\)](#)  
[NoSlash\(Source\\$\)](#)  
[NotLegal\(MacroName\\$\)](#)  
[NukeToolBar](#)  
[NukeTopMenu](#)  
[Pause](#)  
[PickFile\\$\(ShowFiles\)](#)  
[PrintPause\(message\\$\)](#)  
[Replace\\$\(Source\\$, Old\\$, New\\$\)](#)  
[ResetTopMenu](#)  
[Reverse\\$\(Source\\$, Marker\\$\)](#)  
[SameFormat](#)  
[SelectSameFormatRight](#)  
[SetTitle\(hWnd, Title\\$\)](#)  
[SetTopMenu\(Index, Name\\$\)](#)  
[SortArray\(Size\)](#)  
[Split\(Source\\$, Marker\\$, First\\$, Second\\$\)](#)  
[sWaitShell\(AppToRun\\$\)](#)  
[TimeFormat\(seconds\)](#)  
[Timer\(Start\)](#)  
[Trim\\$\(Source\\$, ZapChar\\$\)](#)  
[Wait\(Seconds\)](#)

WaitShell(AppToRun\$)

## **ActivatePartial(Doc\$)**

This subroutine can be used to supplement the built in command **Activate WindowName\$**. The difference between the two is that this procedure only requires a partial name, whereas the built in command requires that you know precisely what's up there on the document bar.

e.g.

```
ActivatePartial("GTOOL")
```

Will cycle through each open window and stop at the first one whose title contains the letters "gtool" (not case-sensitive).

## **CheckLib**

This function returns the version number of **gLib**.

```
If glib.CheckLib Then Print "Okay"
```

## **Chew\$(Source\$,Marker\$)**

A string function that returns the left portion of a string up to the occurrence of the marker.

The source string is truncated. So, for instance:

```
S$ = "one|two|three|four"  
m$ = "|"  
For x = 1 to 4  
    MsgBox glib.Chew$(s$,m$)  
Next x
```

--would display four message boxes, containing one, two, three and four, in sequence.

## **ClearStatus**

Sometimes the status bar refuses to clear (and return to the standard information). This routine can be called after your macro has issued a Print statement to clear the status bar.

## **CountChar(Source\$, Char\$)**

A function that returns the number of occurrences in a string of a specific character:

```
x = gLib.CountChar("one,two,three",",")
```

–would return 2.



## **DisplaygLibHelp**

This routine is called when you execute gLib directly. It displays a listbox of all routines and functions.

## **DoPause(Seconds)**

A subroutine that will pause the execution of a macro for the specified number of seconds. This is more accurate than the Wait subroutine.

## **fExist(FullPathName\$)**

This function returns -1 if the specified file was found; 0 if not.

## **fFileCount(FileSpec\$)**

This function counts the number of files in a directory:

```
DotCount = gLib.fFileCount("c:\winword\*.dot")
```

## **fFileName\$(b\$)**

This function returns the filename portion of a full path name.

```
Name$ = gLib.fFileName$("c:\winword\normal.dot")
```

would return "normal".

## **fFileNameExt\$(b\$)**

Returns the filename plus extension from a full path designation.

```
Name$ = gLib.fFileNameExt$("c:\winword\normal.dot")
```

would return "normal.dot".

## **fStr\$(Num)**

Returns a formatted string from an integer, stripping the padding Word places in front of a digit.

## **GetAppHandle**

Returns the current handle (a unique integer that identifies a window in Windows) of the Word application.

This is used in conjunction with `GetCurrentTitle$()` and `SetTitle` to retrieve or change the text on the Word application title bar.

See `SetTitle` for an example.



## **GetCurrentTitle\$(hWnd)**

Returns the current text of the specified window. The identifying integer value of hWnd must first be gathered using either GetAppHandle or GetDocHandle.

See SetTitle for an example.

## **GetDocDir\$**

Returns the directory in which a document is stored.

If this function is called from within a macro pane it returns a null string.

## **GetDocHandle**

Returns the current handle (a unique integer that identifies a window in Windows) of the current document's window.

This is used in conjunction with `GetCurrentTitle$()` and `SetTitle` to retrieve or change the text on the document title bar.

See `SetTitle` for an example.

## **GetFile(FullName\$,Dir\$,Default\$)**

Displays the FileOpen dialog box.

## **GetPath\$(Source\$)**

Strips out a path from a full file/path specification

## **GetTemplate\$**

Returns the current document's template

## **gLibInstalled(Macro\$)**

This function is unique in the package. It should not be used from within the **gLib** macro, but should be copied into any macro that calls a **gLib** routine.

What it does is use the same logic as **MacroExist** to determine if there is, in fact, a macro named **gLib** in the current Normal.dot.

This allows you to test at the top of a macro that requires **gLib** if the library is installed. It displays a warning message and request for re-installation.

If you look at almost any of the more complicated macros in **gToolBox** you will see an example of how this is used.

## **gMsg(Msg\$,Title\$)**

Displays a message with an attention sign.



## **gQuery(Msg\$,Title\$)**

Displays a query dialog box.

## **HasKey(Macro\$,Context)**

Returns whether or not a macro in the given context has a key assignment.

## **Inject\$(Source\$, New\$, Place)**

A string function to insert a string within a string at a given place.

```
Name$ = gLib.Inject$(Name$("Guy Gallo", "J. ",4)
```

–would return "Guy J. Gallo"

## **IsMacroPane([MacroName\$])**

Returns -1 if the focus is currently on a macro editing window

**MacroName\$** is an optional parameter containing the name of the macro calling the function. This is so that the warning message will be smart and tell you the name of the macro causing trouble...

## **KeyDescription\$(KeyCode)**

This function returns a string mnemonic for the specified KeyCode.

## **IHelp(HelpFileName\$)**

Loads the specified HLP file.

```
glib.IHelp("gtools.hlp")
```

--would load the windows help engine and attempt to load the file GTOOLS.HLP.

(Both this and the following sub routine were adapted (very slightly) from a routine by Julianne Sharer of WexTech Systems.)

## **IcHelp(ContextNumber,HelpFileName\$)**

Loads the specified HLP file with a context number.

```
glib.IHelp(2,"gtools.hlp")
```

--would load the windows help engine and attempt to load the file GTOOLS.HLP and moves to the help page specified by the context number 2.

## **ListMacros\$(Context,All)**

A simple function that displays a list of macros and returns the selected macro or a null string (if cancelled)

It will display a list box of all macros in the specified context (0 for global and 1 for the current template).

If All is 0 then only user macros will be displayed. If All is 1 then the built-in commands will also be displayed.

**Limitation:** this routine does not sort the list of user macros. User macros are displayed in the order they were created.

The built-in commands, for who knows what reason, are also not sorted alphabetically...

A sort routine (found in WOPR) could be added, but it would significantly slow things down.



## LoopMsg(Message\$)

This is an extremely useful function, to be used while writing macros. Its purpose is to display the value of any number of variables *during the execution of a loop*.

For example:

```
Loop = -1           'set the boolean variable Loop to true
For x = 64 to 255

StringVar$ = StringVar$+ StringVar$ + Chr$(x)
Index = x
If Loop Then Loop = glib.LoopMsg("Index: " +Str$(x) + "; String: "+ StringVar$)

Next X
```

When the function displays the variables, you have two choices, **OK** and **Quit the loop**.

If you quit the loop the variable Loop is set to false, the loop continues on it's way without displaying a message...

## **MacroExist(Macro\$)**

Returns True or False (-1/0) if a macro exists.

Takes a string argument in the same form as IsExecuteOnly.

MacroExist([TemplateName:]MacroName)

e.g. MacroExist("NORMAL.DOT:GLIB")

If the template name is omitted the macro will look in the current document's template first and then in the global context.

## **NoSlash(Source\$)**

This function checks to see if the last character in a string is a backslash and if so, strips it off. This is useful for properly formatting a path specification for **ChDir**.

## **NotLegal(MacroName\$)**

This routine returns false if the current location of the insertion point will not allow the execution of a macro.

## **NukeToolBar**

A dangerous macro. It wipes out the current toolbar, turning all tools to spaces. This can be useful if you want to build a toolbar from scratch. Use with care.

## **NukeTopMenu**

Dangerous. Will rename all of the top menus to a space character.

To be used in conjunction with **ResetTopMenus** and the internal command **RenameMenu**.

## **Pause**

Pauses the execution of a macro until Enter is pressed.

## **PickFile\$(ShowFiles)**

This is an alternative to the GetFile\$() function. This routine use API calls (discovered by the WordBasic and Windows API wizard Scott Krueger), to gather the current directory and its files and display them in a sorted list. The list box isn't as pretty as the standard Windows 3.1 dialogs, but it is fast and simple.

To call this routine you would do something like the following:

```
ChosenFile$ = gLib.PickFile$(1)
```

If you pass 0 instead of one only directories, no files, will be shown. A version of this routine is used in the FileFind replacement.



## **PrintPause(message\$)**

Pauses the execution of a macro and displays a message on the status bar until Enter is pressed.

## **Replace\$(Source\$, Old\$, New\$)**

This function replaces every occurrence in a string of one string with another string.

```
N$ = glib.Replace("h*e*I*I*o","*","_")
```

–would return the string "h\_e\_l\_l\_o"

## **ResetTopMenu**

Resets the top menus to the default names. Used by a macro that calls **NukeTopMenu**.

## **Reverse\$(Source\$, Marker\$)**

This function rearranges a string along a given character or group of characters. This is useful, in combination with **Replace\$()** when you want to change LastName,FirstName into Firstname LastName. For example:

```
Name$ = "Gallo,Guy"  
Name$ = gLib.Reverse$(Name$,"")  
Name$ = gLib.Replace$(Name$,"","Chr$(32))
```

After these three lines the variable Name\$ would hold the string "Guy Gallo".

## **SameFormat**

Returns true if every character in the selection has the identical character attributes.

If any character in the selection has a different character attribute it returns false.

## SelectSameFormatRight

Extends the selection until encountering a different character format from the starting point.

This is used by **ReInsertNotes**.

This subroutine calls another function in **gLib**, named SameFormat

```
Sub SelectSameFormatRight      'Extends the selection until some part of the character
                               'formatting changes
CharRight 1, 1
While SameFormat
    CharRight 1, 1
Wend
CharLeft 1, 1
End Sub
```

A corresponding **SelectSameFormatLeft** could easily be implemented as well.

## **SetTitle(hWnd, Title\$)**

Sets the title of the specified window to the value of Title\$. This subroutine is used in conjunction with GetDocHandle or GetAppHandle and GetCurrentTitle\$().

Below is a bit of example code that would change the Word application bar to "Hello Word!", display a message box, and then reset the title bar:

```
AppHandle = GetAppHandle
Current$ = GetCurrentTitle$(AppHandle)
SetTitle(AppHandle,"Hello World")
MsgBox "Press OK to continue..."
SetTitle(AppHandle,Current$)
```

## **SetTopMenu(Index, Name\$)**

Changes the name of one of the eight top menus.



## **SortArray(Size)**

Sorts a globally declared array. This routine must be copied into your macro. That is, it cannot be called from gLib.

## **Split(Source\$, Marker\$, First\$, Second\$)**

This is a subroutine that will take a string and divide it in two at a specific point.

For example, if Source\$ = "Guy+Gallo", the command

```
gLib.Split(Source$,"+",First$,Second$)
```

would return store "Guy" in the variable First\$, and "Gallo" in the variable Second\$.

## **sWaitShell(AppToRun\$)**

A subroutine that shells to an application and waits until that application is complete before continuing with the macro. See also WaitShell (the function) below.

## **TimeFormat(seconds)**

Returns a formatted time string based on the number of seconds passed as a parameter. Used in conjunction with the Timer function.

## **Timer(Start)**

A function that can be used to start and stop a timer. This can be useful when trying to optimize a macro. It can also be used to create a time log macro.

Usage:

To start the timer enter something like:

```
StartTime = Timer(now)
```

In the above, "now" is a dummy variable. It has no value.

To stop the timer, and gather the number of seconds elapsed since starting the timer, you would call with:

```
StopTime = Timer(StartTime)
```

## **Trim\$(Source\$, ZapChar\$)**

This function strips a character from both sides of a string. So, for instance:

```
Pad$ = "****Test****"
```

```
Unpad$ = gLib.Trim$(Pad$, "**")
```

–would return, in the variable Unpad\$, the string "Test"

## **Wait(Seconds)**

Not astronomically accurate... I think it's dependent on CPU speed... but still useful in debugging and testing macros...

## **WaitShell(AppToRun\$)**

This is a function that allows you to shell to a second application from a macro and pause until that application is complete before the macro continues.

This function version of the routine contains error checking, and will display a message if the shell fails.

It also will pop you back to the shelled application if you make Word the active application.

You can make any other application active (other than Word). Although, of course, things will slow down.



EM is a unit of measurement taken from the character box, as filled by the letter "M". An EMDash is on em wide. An ENDash is one-half of an EMDash.

For the proper usage of EM and ENDashes, see the *Chicago Manual of Style*, page 150.

